

Free eNewsletter



Shop By Type

[Cable Assemblies](#)
[Adapters](#)
[Connectors](#)
[Rack Panels](#)
[Bulk Cable](#)
[Tools](#)
[Switch Boxes](#)
[Network Cards](#)
[Hubs & Switches](#)
[Converters & Transceivers](#)
[KVM Switches](#)
[Antennas](#)

[Overstock/Sale Items](#)
[Top 10 Products](#)

Shop By Category

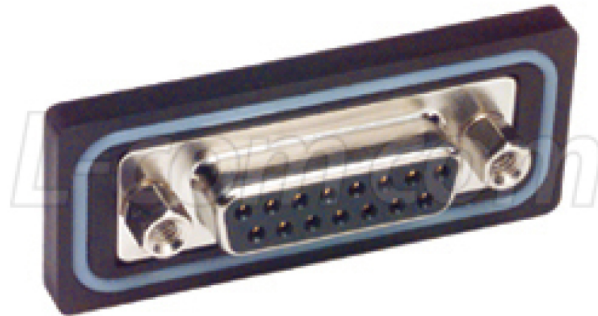
[IEEE-488 GPIB](#)
[Coaxial](#)
[Monitor, Video](#)
[Fiber Optic](#)
[D-Subminiature](#)
[Modular](#)
[USB, DIN, Firewire, SCSI, and Others](#)
[Wireless Infrastructure](#)
[Weatherproof Enclosures](#)
[Networking and Other Equipment](#)

You Are Here: [Home](#) > [D-Subminiature](#) > [Connectors](#) > [WPSD](#) > **WPSD15S**

Waterproof Panel Mount Solder Cup D-Sub Connector, DB15F

Features for this product

- Waterproof D-sub panel mount solder connectors
- IP67 rating provides protection under harsh conditions
- Mounts on any panel or enclosure 0.078" thick or smaller
- Gold plated contacts provide reliable connections with repeated mating cycles
- Also available in DB9, DB25 & HD15 sizes, male & female genders



Product Wizards

Cable Assemblies
Adapters
Connectors
Rack Panels
Tools
Switch Boxes
Network Cards
Hubs or Switches
Ethernet Converters
KVM Switches

Technical Resources

FAQs
Connector Chart
Glossary
Tutorials
Tips and Videos
White Papers
Catalog Downloads
eNewsletter Archive



L-com is ISO 9001:2008
[UL Certified](#)



GSA

Harsh outdoor or indoor environments can destroy electronic equipment. Standard D-sub connectors are not intended to withstand contaminants such as water and dust. This waterproof solder cup DB15 female connectors will accommodate wire ranges from 30 - 20 AWG. Construction features gold plated brass contacts, nickel plated steel shells, and a silicone insulating ring. Maximum recommended panel thickness is 0.078"

Details for this D-Subminiature product

L-com Item # WPSD15S

Manufacturer L-com

ASIN # [\(More\)](#) B000AA2QO8

UPC # [\(More\)](#) 822335041189

RoHS Status [RoHS Compliant](#)  [\(More\)](#)

 [Catalog Page](#)

 [2D Drawing \(.pdf\)](#)

 [3D CAD Model \(.step\)](#)

Item #	Description	1-9	10-24	25-99	100-249	250-499
--------	-------------	-----	-------	-------	---------	---------

Waterproof D-Sub Connectors and Backshells - IEC IP67 Rated

Harsh outdoor or indoor environments can destroy electronic equipment. Standard D-Sub connectors are not intended to withstand contaminants such as water and dust. By utilizing tough ABS housings, rubber gaskets and silicone insulating rings, these products achieve IEC IP67 ratings. Panel mounted D-Sub solder connectors are rear mounted and fit into standard D-Sub holes. Backshells conform to a variety of cable diameters by adjusting the sealing nut. L-com will manufacture cable assemblies using waterproof backshells with modest minimum requirements.

Waterproof D-Sub Panel Mount Solder Connectors

These solder cup connectors are available in male or female genders and DB9, DB15, DB25 and HD15 sizes. They will accommodate wire ranges from 30 - 20AWG. Construction features gold plated brass contacts, nickel plated steel shells and a silicone insulating ring. Maximum recommended panel thickness is 0.078".

WPSP9P	Waterproof Panel Mount Solder Cup D-Sub Connector, DB9M
WPSP9S	Waterproof Panel Mount Solder Cup D-Sub Connector, DB9F
WPSP15P	Waterproof Panel Mount Solder Cup D-Sub Connector, DB15M
WPSP15S	Waterproof Panel Mount Solder Cup D-Sub Connector, DB15F
WPSP25P	Waterproof Panel Mount Solder Cup D-Sub Connector, DB25M
WPSP25S	Waterproof Panel Mount Solder Cup D-Sub Connector, DB25F
WPSPDH15P	Waterproof Panel Mount Solder Cup D-Sub Connector, HD15M
WPSPDH15S	Waterproof Panel Mount Solder Cup D-Sub Connector, HD15F

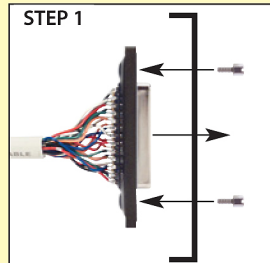
Waterproof D-Sub Backshell Kits

These backshell kits include solder cup connectors and are also available in male or female genders and DB9, DB15, DB25 and HD15 sizes. The connectors will accommodate wire ranges from 30 - 20AWG. Backshell construction features ABS housings, nylon seals, nickel plated brass thumbscrews and rubber sealing gaskets to insure IEC IP67 rating. Color: Black.

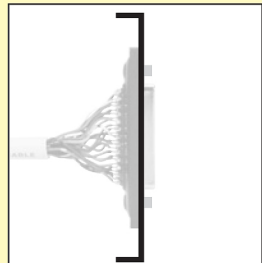
WPDB9P-KIT	Waterproof D-Sub Backshell Kit, DB9M
WPDB9S-KIT	Waterproof D-Sub Backshell Kit, DB9F
WPDB15P-KIT	Waterproof D-Sub Backshell Kit, DB15M
WPDB15S-KIT	Waterproof D-Sub Backshell Kit, DB15F
WPDB25P-KIT	Waterproof D-Sub Backshell Kit, DB25M
WPDB25S-KIT	Waterproof D-Sub Backshell Kit, DB25F
WPHDB15P-KIT	Waterproof D-Sub Backshell Kit, HD15M
WPHDB15S-KIT	Waterproof D-Sub Backshell Kit, HD15F



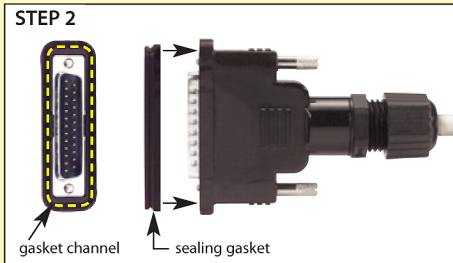
Tip How to apply panel mount waterproof D-Sub products



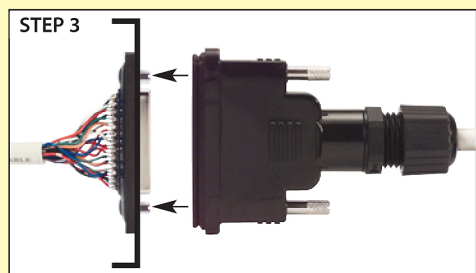
Mount D-Sub connector from inside of panel/enclosure using hex jack screws provided.



Maximum panel thickness is 0.078"



Apply sealing gasket (supplied with backshell kit) in backshell channel around perimeter of D-Sub connector.



Mate connectors and secure backshell thumbscrews to threaded jackscrews.



Waterproof IP67 rating is achieved by gaskets/seals in backshell and silicone seal ring in connector.